

CUSTOMER SIGNATURE:

DATE:

IN AN EFFORT TO ENSURE ACCURACY, PLEASE REVIEW YOUR DRAWING DIMENSIONS AND FITTING SIZES FOR POSSIBLE ERRORS AND OMISSIONS. CALL WITH ANY CORRECTIONS BEFORE SIGNING THIS DRAWING. ALL TANKS DESIGNED AND/OR BUILT, IN PART OR COMPLETE, BY ALUMITANK OR ANY OF ITS PEOPLE ARE CERTIFIED FOR USE ONLY WITH DISTILLATE, HYDRAULIC, OR WATER. ANY VARIATIONS OF USE OR MODIFICATIONS OF THE TANK ARE PROHIBITED. CUSTOMER SIGNATURE ON DOCUMENT/DRAWING INDICATES AGREEMENT BY SIGNER OR RECIPIENT OF TANK AND HOLDS ALUMITANK HARMLESS.

CUSTOMER NAME:

FINISH:

CHASSIS STYLE:

SIDE OF TRUCK:

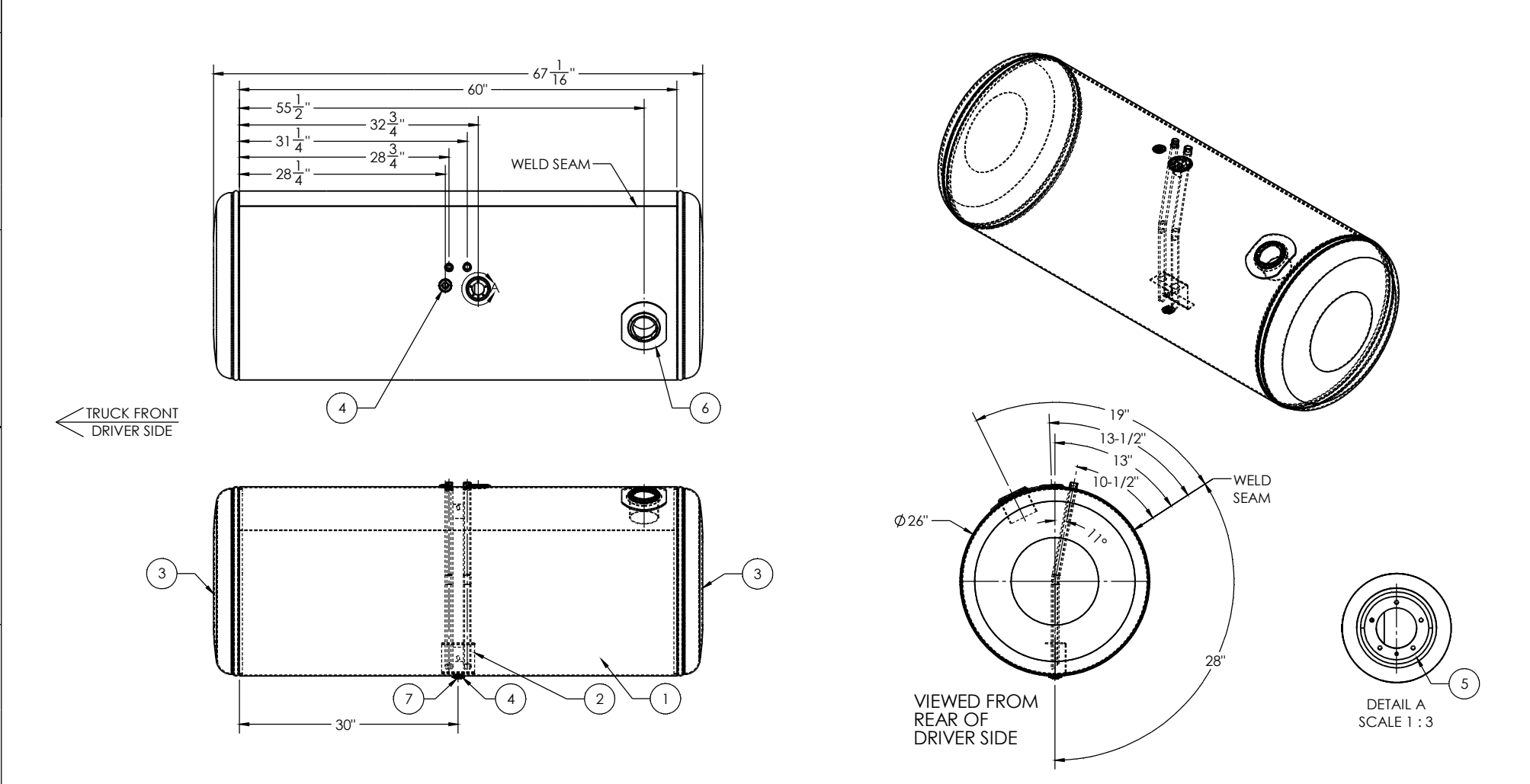
CAPACITY:

SHOP #:

SERIAL #:

SHIP DATE:

PARTS:



ITEM NO.	PART NUMBER	DESCRIPTION	QTY.
1	BRL-AT-PB-1009	1/8" TANK BARREL	1
2	DTA-311241630	26" POLISHED PETERBILT TUBE ASSEMBLY	1
3	ECP-4160013200	26" POLISHED ALUMINUM PETERBILT STYLE END CAP	2
4	FLG-050230	1/2" NPTF POLISHED ALUMINUM FLANGE	2
5	BSE-00183210	CURVED 90 POLISHED ALUMINUM SENDER BASE	1
6	FLN-110022300	POLISHED ALUMINUM PETERBILT FILL NECK	1
7	94135	1/2" SOCKET PIPE PLUG 3/4" TAPER NPTF ZINC	1

TITLE:

26x60

SIZE

REV

QC

INITIALS

PSI

DIMS

PARTS

TAG

PKG

UNLESS OTHERWISE SPECIFIED:

DIMENSIONS ARE IN INCHES

TOLERANCES:

FRACTIONS ±

ANGULAR: MACHINE BEND ±

TWO PLACE DECIMAL ±

THREE PLACE DECIMAL ±

INTERPRET GEOMETRIC TOLERANCING PER:

MATERIAL:

5052 H32 ALUMINUM

FRESH

SEE BOM

DO NOT SCALE DRAWING

DRAWN

CHECKED

ENG APPR.

INFO APPR.

DATE

COMMENTS:

AlumiTank®

THE FUEL TANK SPECIALISTS

11317 N. US HWY 14 HARVARD, IL 60033 815-943-6649

800-452-4630 FAX 855-774-6918 WWW.ALUMITANK.COM INFO@ALUMITANK.COM

DWG. NO. AT-PB-1009

SCALE: 1:10 | WEIGHT: 80.81 | SHEET 1 OF 2