

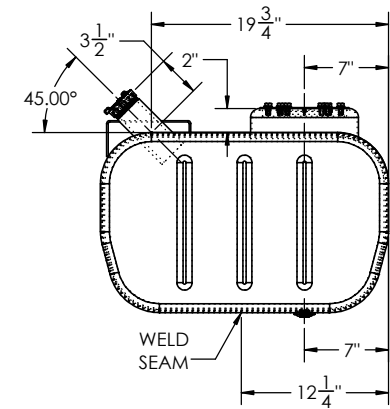
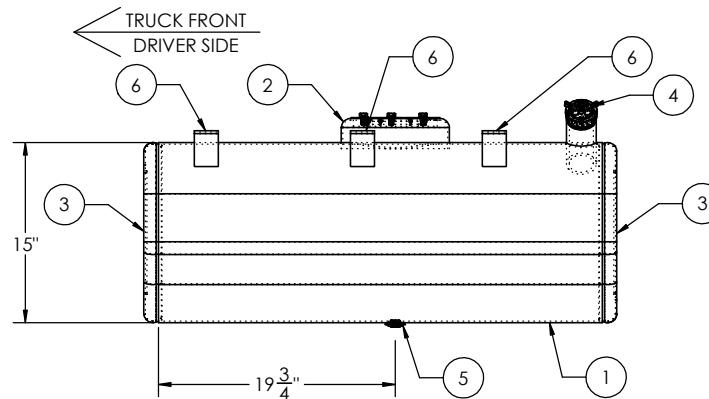
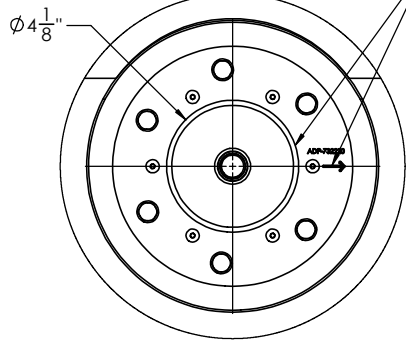
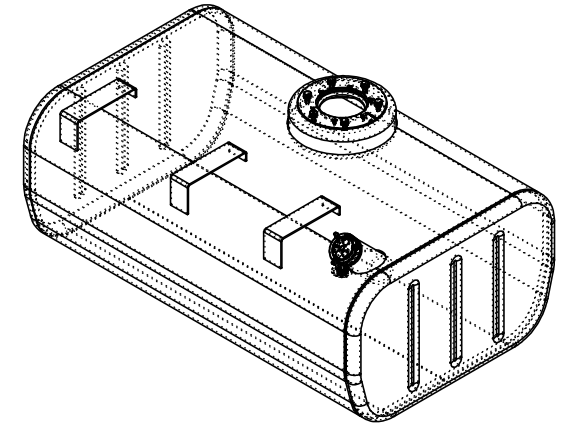
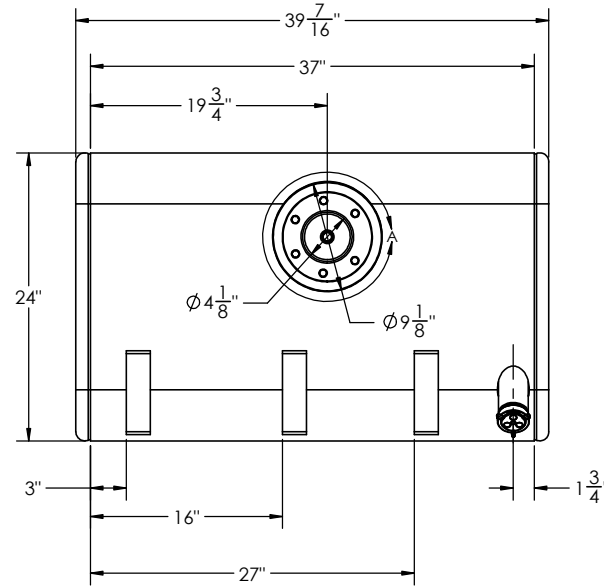
CUSTOMER SIGNATURE: \_\_\_\_\_ DATE: \_\_\_\_\_

IN AN EFFORT TO ENSURE ACCURACY, PLEASE REVIEW YOUR DRAWING DIMENSIONS AND FITTING SIZES FOR POSSIBLE ERRORS AND OMISSIONS. CALL WITH ANY CORRECTIONS BEFORE SIGNING THIS DRAWING. ALL TANKS DESIGNED AND/OR BUILT, IN PART OR COMPLETE, BY ALUMITANK OR ANY OF ITS PEOPLE ARE CERTIFIED FOR USE ONLY WITH DISTILLATE, HYDRAULIC, OR WATER. ANY VARIATIONS OF USE OR MODIFICATIONS OF THE TANK ARE PROHIBITED. CUSTOMER SIGNATURE ON DOCUMENT/DRAWING INDICATES AGREEMENT BY SIGNER OR RECIPIENT OF TANK AND HOLDS ALUMITANK HARMLESS.

CUSTOMER NAME:	SIDE OF TRUCK:	SHOP #:	PARTS:
FINISH:	CAPACITY:	SERIAL #:	
CHASSIS STYLE:		SHIP DATE:	

We highly recommend using some of the following parts:

Part Number	Description	Price
MTG-GM15BK	Black powder coated strap for 15" tapered bottom tank	\$45 each
MTG-GM15-SS	Stainless steel strap for 15" tapered bottom tank	\$60 each
MTG-GM15-IK	15" GMC Insulator Kit	\$45 each



VIEWED FROM REAR OF DRIVER SIDE

ITEM NO.	PART NUMBER	DESCRIPTION	AT-GM-4001/QTY.
1	BRL-GM-4001	1/8" TANK BARREL	1
2	ADP-732220	MILGRADE ALUMINUM GMC RISER DOME PLATE (NEW)	1
3	ECP-024038412500	15" X 24" MILGRADE ALUMINUM TAPERED BOTTOM END CAP	2
4	FLN-0961012230	6" LONG - 2" NPSM - 11.5 TPI MILGRADE ALUMINUM FILL NECK	1
5	FLG-050220	1/2" NPTF MILGRADE ALUMINUM FLANGE	1
6	CLP-2	GM UPPER STEP CLIP	3
7	94135	1/2"NPTF SOCKET HEAD PIPE PLUG	1
8	FCP-1330 (600133)	2" NON-VENTED, NON-LOCK CAP	1

TITLE:		UNLESS OTHERWISE SPECIFIED:		NAME		DATE	
DIMENSIONS ARE IN INCHES		TOLERANCES:		DRAWN		BREATHERSTONE	
FRACTIONAL ±		ANGULAR: MACH ± BEND ±		CHECKED			
TWO PLACE DECIMAL		THREE PLACE DECIMAL ±		ENG APPR.			
MFG APPR.		INTERPRET GEOMETRIC TOLERANCING PER:		MFG APPR.			
MATERIAL:		5052 H32 ALUMINUM		G.A.			
FINISH:		SEE BOM		COMMENTS:			
DO NOT SCALE DRAWING							

11317 N. US HWY 14	800-652-6630
HARVARD, IL 60033	FAX 855-774-6918
815-943-6649	WWW.ALUMITANK.COM
INFO@ALUMITANK.COM	

DWG. NO.	AT-GM-4001
SCALE: 1:8	WEIGHT:
	SHEET 1 OF 2