

CUSTOMER SIGNATURE:

DATE:

IN AN EFFORT TO ENSURE ACCURACY, PLEASE REVIEW YOUR DRAWING DIMENSIONS AND FITTING SIZES FOR POSSIBLE ERRORS AND OMISSIONS. CALL WITH ANY CORRECTIONS BEFORE SIGNING THIS DRAWING. ALL TANKS DESIGNED AND/OR BUILT, IN PART OR COMPLETE, BY ALUMITANK OR ANY OF ITS PEOPLE ARE CERTIFIED FOR USE ONLY WITH DISTILLATE, HYDRAULIC, OR WATER. ANY VARIATIONS OF USE OR MODIFICATIONS OF THE TANK ARE PROHIBITED. CUSTOMER SIGNATURE ON DOCUMENT/DRAWING INDICATES AGREEMENT BY SIGNER OR RECIPIENT OF TANK AND HOLDS ALUMITANK HARMLESS.

CUSTOMER NAME:

SIDE OF TRUCK:

SHOP #:

PARTS:

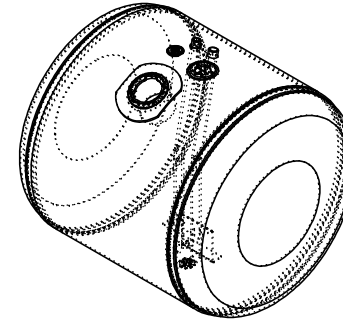
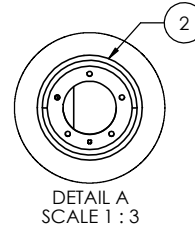
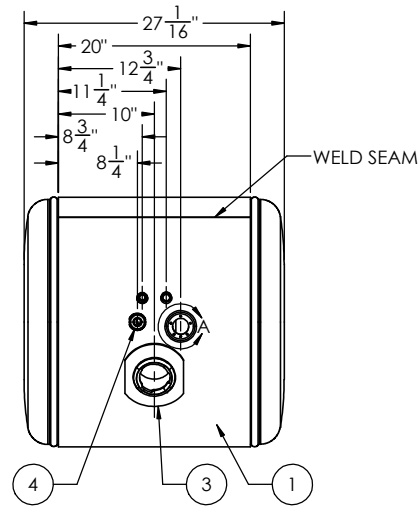
FINISH:

CAPACITY:

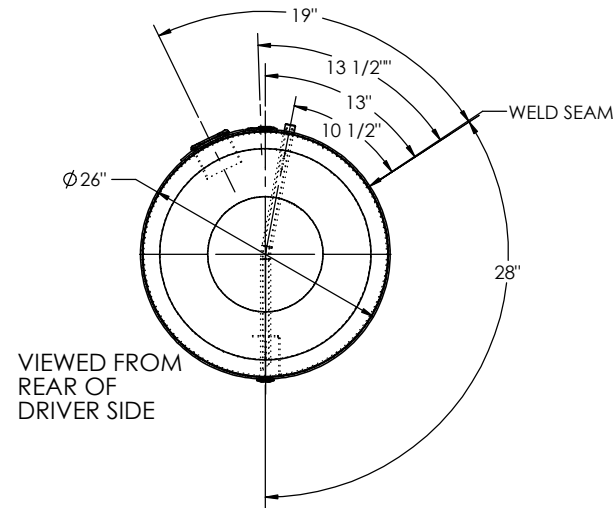
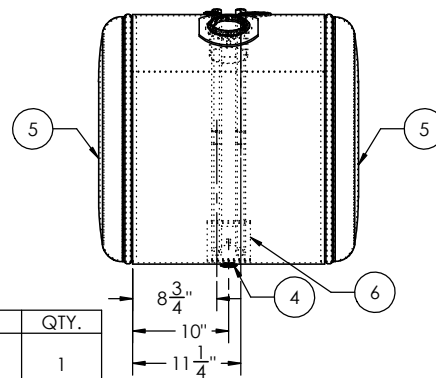
SERIAL #:

CHASSIS STYLE:

SHIP DATE:



TRUCK FRONT
DRIVER SIDE



VIEWED FROM
REAR OF
DRIVER SIDE

| ITEM NO. | PART NUMBER | DESCRIPTION | QTY. |
|----------|-----------------------|---|------|
| 1 | BRL-11-04801-019T024U | BRL-11-04801-019T024U | 1 |
| 2 | BSE-00182210 | CURVED 90 MILGRADE ALUMINUM SENDER BASE | 1 |
| 3 | FLN-110022200 | MILGRADE ALUMINUM PETERBILT FILL NECK | 1 |
| 4 | FLG-050220 | 1/2" NPTF MILGRADE ALUMINUM FLANGE | 2 |
| 5 | ECP-4160012200 | 26" MILGRADE ALUMINUM PETERBILT STYLE END CAP | 2 |
| 6 | DTA-311241620 | 26" MILGRADE PETERBILT TUBE ASSEMBLY | 1 |

| | | | | | | | |
|------------------------------|--|--|--|---|--|-------------------|--|
| TITLE: | | UNLESS OTHERWISE SPECIFIED: | | NAME | | DATE | |
| SIZE | | REV | | DRAWN | | | |
| C | | | | CHECKED | | | |
| | | | | ENG APPR. | | | |
| | | | | MFG APPR. | | | |
| | | | | Q.A. | | | |
| | | | | COMMENTS: | | | |
| PROPRIETARY AND CONFIDENTIAL | | THE INFORMATION CONTAINED IN THIS DRAWING IS THE SOLE PROPERTY OF ALUMITANK. ANY REPRODUCTION IN PART OR AS A WHOLE WITHOUT THE WRITTEN PERMISSION OF ALUMITANK IS PROHIBITED. | | MATERIAL | | 5052 H32 ALUMINUM | |
| | | | | FINISH | | SEE BOM | |
| | | | | DO NOT SCALE DRAWING | | | |
| 800-452-6630 | | | | 11317 N. US HWY 14 HARVARD, IL 60033 815-943-6649 | | | |
| WWW.ALUMITANK.COM | | | | INFO@ALUMITANK.COM | | | |
| DWG. NO. | | | | 11-04801-019T024U | | | |
| SCALE: 1:10 | | | | WEIGHT: SHEET 1 OF 1 | | | |